

#edchatie Number 82



A weekly discussion by Irish educators. The topic was "Expulsion and the right to education. The individual or the majority?",
Mon 28th January, 2013.
by [fboss](#)



- Remember, when tweeting in tonight's [#edchatie](#) discussion, always add in the hashtag [#edchatie](#) - we start in three minutes

[fboss](#) 12 hours ago



- Welcome to tonight's [#edchatie](#) and as usual, before we start, please introduce yourself (don't forget the hashtag)

[fboss](#) 12 hours ago



- Ciara in Dublin [#edchatie](#)

[PrimEdTeacher](#) 12 hours ago



- [#edchatie](#) John in Maoy

[johnmayo](#) 12 hours ago



- [@fboss](#) Catherine In Killarney [#edchatie](#)

[catherinem23](#) 12 hours ago



- Hi all, Marie here, primary school teacher, Co. Kildare. [#edchatie](#)

[mariesynnot](#) 12 hours ago



- Fred Boss in Drogheda, staying warm with a cuppa tea and looking forward to the next hour of the [#edchatie](#) discussion

[fboss](#) 12 hours ago



- Fiona in a very wild and windy Donegal! [#edchatie](#)

[ffarrv1](#) 12 hours ago



- Hi [#edchatie](#) Emer here, teaching in Carlow, living in Kildare, dreaming of the sea

[Emer_Byrden](#) 12 hours ago



Tonight's topic is "Expulsion and the right to education. The individual or the majority?" What do you think? [#edchatie](#)

[fboss](#) 12 hours ago



Damien, primary teacher living in Sligo [#edchatie](#)

[seomraranga](#) 12 hours ago



Laurence Cuffe. I teach math in youthreach, where some of the expelled end up [#edchatie](#)

[CuffeL](#) 12 hours ago



[@fboss](#) I think that in general the type of child that will be expelled may not be best served by staying at home [#edchatie](#)

[catherinem23](#) 12 hours ago



Oops late to [#edchatie](#). Dave from Michigan.

[dprindle](#) 12 hours ago



[@dprindle](#) enjoy [#edchatie](#) Dave!

[gravesle](#) 12 hours ago



Worth another tweet: The first Dáil: Perhaps a fitting anniversary given... <http://t.co/BEGjYz4n> (via [@CedarLoungeRev](#)) [#edchatie](#) [#history](#)

[levdavidovic](#) 12 hours ago



How common is expulsion? I've taught in a good few schools over the years and have never come across an expulsion before. [#edchatie](#)

[seomraranga](#) 12 hours ago



[@fboss](#) I also think that until parents lives are disrupted we have very little hope in changing behaviour [#edchatie](#)

[catherinem23](#) 12 hours ago



[@dprindle](#) Nope - you've made it in plenty of time & hello to [@gravesle](#) too You also joining us on [#edchatie](#) tonight?

[fboss](#) 12 hours ago



Usually in MI expulsion is related to a violent action, drug crime, or threat (gun, etc). [#edchatie](#)

[dprindle](#) 12 hours ago



Danny clondalkin. I think at times, expulsion is necessary, especially in schools with little resources [#edchatie](#)
[Sir_Snackbox](#) 12 hours ago



Maggie in wild Donegal .. Here for [#edchatie](#) for as long as my electricity holds :-/
[MaggieMGreen](#) 12 hours ago



[@dprindle](#) Many districts use far less for expulsion, I think you're giving us far too much credit [#edchatie](#)
[techsavvied](#) 12 hours ago



However, if a student is expelled they and parents must be given options to continue their education [#edchatie](#)
[dprindle](#) 12 hours ago



A right deferred is a right denied. Teaching A students is easy, the challenge is further down. [#edchatie](#)
[Cuffel](#) 12 hours ago



[#edchatie](#) unfortunately behaviour mechanisms leading to expulsion are the only way to make authorities react to very vulnerable children
[Emer_Byrden](#) 12 hours ago



[@seomraranga](#) I came across it once as a secondary teacher and once as a primary school teacher [#edchatie](#)
[MaggieMGreen](#) 12 hours ago



One bad students can make the classroom a very bad learning enviorn. It should be a last resort however [#edchatie](#)
[Sir_Snackbox](#) 12 hours ago



Joanna - Dublin. Spent 10 years working with young people at risk or exclusion/behavioral problems [#edchatie](#). Schools have v. little support
[KeywordsEnglish](#) 12 hours ago



Should we being trying to identify those that have the potential to be expelled and intervene first? [#edchatie](#)
[dprindle](#) 12 hours ago



[@dprindle](#) I think the same applies here in Ireland as the student is still entitled to an education up to a certain age, prob 16 [#edchatie](#)
[seomraranga](#) 12 hours ago



If we start from where the child is then we have to take the peers into consideration .. Health and safety [#edchatie](#) in my experience

[MaggieMGreen](#) 12 hours ago



Natalie, Primary sub, Kilkenny [#edchatie](#)

[natalie_swain](#) 12 hours ago



When all other avenues have been exhausted, and rest of class are suffering - then expulsion has to be considered? [#edchatie](#)

[ffarry1](#) 12 hours ago



[@fboss](#) Evelyn, English teacher. I'll be late n lurking tonight, sick child in our house :-([#edchatie](#)

[evelynconnor](#) 12 hours ago



My district has an Alt Ed program that helps. But sometimes they just don't want to be helped. [#edchatie](#)

[dprindle](#) 12 hours ago



If we are starting from where the child is would any child ever be expelled? Do the issues start when we ask them to conform? [#edchatie](#)

[mariesynnot](#) 12 hours ago



[#edchatie](#) Hi. Nicki here. Junior infants teacher and late to the party.

[OLNicki](#) 12 hours ago



[@Sir_Snackbox](#) So send the good students home, because they will survive it best, and concentrate on those that need teaching most! [#edchatie](#)

[CuffeL](#) 12 hours ago



[@dprindle](#): I agree. Early intervention is critical but funding is increasingly a challenge [#edchatie](#)

[KeywordsEnglish](#) 12 hours ago



[@dprindle](#): I agree. Early intervention is critical but funding is increasingly a challenge [#edchatie](#)

[click4ESOL](#) 12 hours ago



Eoghan from Donegal living in Carlow, secondary English teacher [#edchatie](#)

[NewEnglishBlog](#) 12 hours ago



[#edchatie](#) when the intervention needed is for family situation and not for child, school based plans are just sticking plasters

[Emer_Byrden](#) 12 hours ago



[#edchatie](#) Frieda Crehan raheny

[friedacrehan](#) 12 hours ago



• [@seomraranga](#) I've never come across it [#edchatie](#)

[mariesynnott](#) 12 hours ago



• Sadly here is the US and the way it sound there in Ireland. When funding gets cut. Counseling/Intervention services 1st to go [#edchatie](#)

[dprindle](#) 12 hours ago



• [@click4ESOL](#) [@dprindle](#) Intervention is indeed critical but we all know about waiting lists to get assessments! [#edchatie](#)

[seomraranga](#) 12 hours ago



• [#edchatie](#) oh dear but the very word "expulsion" sounds ugly and makes me feel uncomfortable.

[AinedeFaosite](#) 12 hours ago



• Expulsion into a society that does little to address that which lead to expulsion is a macro matter fuelled by micro concerns [#edchatie](#)

[PrimEdTeacher](#) 12 hours ago



• [@seomraranga](#) As it's meant to be it's the last resort, but is it ever possible to never reach it? Then again, an unused deterrent? [#edchatie](#)

[fboss](#) 12 hours ago



• Finally and sadly after Sandy Hook we are talking about intervention and funding for it. [#edchatie](#)

[dprindle](#) 12 hours ago



• ["@NewEnglishBlog](#): Eoghan from Donegal living in Carlow, secondary English teacher [#edchatie](#)" hope you saw [#Abhainn](#) on rte1 earlier!

[AinedeFaosite](#) 12 hours ago



• [#edchatie](#) Maria from Dublin. Wearing a parent hat. Lurking tonight. Interesting topic.

[MariaMernaagh](#) 12 hours ago



• [@dprindle](#) Agree with that - I think schools are always trying to act in the best interest of the student - but is expulsion that? [#edchatie](#)

[fboss](#) 12 hours ago



• [#edchatie](#) I don't know about expulsion- imagine it's not too common. But what are the alternatives? How to address serious difficulties?

[OLNicki](#) 12 hours ago



[@fboss](#) [@seomraranga](#) sometimes unfortunately it's a necessity. We can only do so much with limited resources and supports. [#edchatie](#)

[MaggieMGreen](#) 12 hours ago



[@fboss](#) Sometimes for the safety of the other students. [#edchatie](#) <http://t.co/p8VwWUMj>



[dprindle](#) 12 hours ago



[@fboss](#) [@dprindle](#) Rarely, though it may be in the interests of maintaining school order. [#edchatie](#)

[Cuffel](#) 12 hours ago



[#edchatie](#) Intervention is needed b4 expulsion. But when all intervention is failing, and others students are suffering, it has to be used...

[patiburke](#) 12 hours ago



Like anyone that commits wrong there should be a plan to reintegrate them, not just move the problem along. [#edchatie](#)

[mariesvnnott](#) 12 hours ago



[#edchatie](#) Schools need more support, prevention of these situations is paramount and expulsion is never a cure for school or child.

[natalie_swain](#) 12 hours ago



[@fboss](#) bad early attendance is an issue, NEWB does not chase kids till they are 6, this starts bad habits, stunts learning [#edchatie](#)

[catherinem23](#) 12 hours ago



... even if it's in the worst interests of the student expelled. Class/school needs > Individual needs.... [#edchatie](#)

[patiburke](#) 12 hours ago



• [#edchatie](#) it is so frustrating that a child who is beyond 'normal' behaviours is the one who is punished, but is the one who needs help

[Emer Byrden](#) 12 hours ago



• I understand the frustration/health and safety concerns of parents and educators, I absolutely feel that schools are the most... [#edchatie](#)

[PrimEdTeacher](#) 12 hours ago



• [@Cuffel](#) [@fboss](#) We expelled some last year for dealing or doing drugs. [#edchatie](#) But also helped parents find help for the Ss

[dprindle](#) 12 hours ago



• [@mariesynnot](#) I think that is the problem. Schools don't always have the necessary supports and resources and hit a stalemate [#edchatie](#)

[MaggieMGreen](#) 12 hours ago



• [#edchatie](#) I wonder what the expulsion rate is like in finland?

[johnmayo](#) 12 hours ago



• ... solutions for the student expelled would have to be worked out outside school so that others aren't interrupted in the process [#edchatie](#)

[patiburke](#) 12 hours ago



• [@PrimEdTeacher](#) Very eloquently put! [#edchatie](#)

[mariesynnot](#) 12 hours ago



• [#edchatie](#) Does anyone think there's a role for alternative school settings on a temporary basis to help address issues?

[OLNicki](#) 12 hours ago



• [@BridCarlow](#) Is earlier intervention just moving from punishment work->detention->exclusion->expulsion? Moving in wrong direction [#edchatie](#)

[fboss](#) 12 hours ago



• [@AinedeFaoite](#) it's a very negative term [#edchatie](#)

[mariesynnot](#) 12 hours ago



• [@johnmayo](#) [#edchatie](#) Zero.

[peter_lydon](#) 12 hours ago



• [@seomraranga](#): [@dprindle](#) Sure! But it's still not taken seriously enough at a societal level [#edchatie](#)

[KeywordsEnglish](#) 12 hours ago



• Teachers always have to have their ears open and ready to talk to a student to help in prevention [#edchatie](#)

[dprindle](#) 12 hours ago



• ... appropriate place to intervene in margin cases & provide for someone on the margins who is at risk of *societal* expulsion [#edchatie](#)

[PrimEdTeacher](#) 12 hours ago



• [#edchatie](#) I do think home schooling is not an appropriate alternative long term. Social and emotional development are so important at school

[OLNicki](#) 12 hours ago



• [@Cuffel_@Sir_Snackbox](#) Part of problem is fact that schools set up to work as mass-production models? Parts fit or get thrown out [#edchatie](#)

[fboss](#) 12 hours ago



• [#edchatie](#) your not legally obliged to send your child to school till 6 and in some countries kids don't start till them

[friedacrehan](#) 12 hours ago



• [#edchatie](#) also, I can't imagine expulsion/exclusion is very common in ireland...

[natalie_swain](#) 12 hours ago



• [@KeywordsEnglish](#) At least in my district it is taken seriously because it affects our State Grade (explusion/dropouts) [#edchatie](#)

[dprindle](#) 12 hours ago



• That said, we need to be resourced to provide that function, and clearly our government doesn't trust the system as much as I do. [#edchatie](#)

[PrimEdTeacher](#) 12 hours ago



• [@Sir_Snackbox](#) [#edchatie](#) One bad teacher can make one bad student make the classroom a very bad learning environ.

[peter_lydon](#) 12 hours ago



• [@tweepete](#) It's the 'not at all costs' bit that's imperative there. [#edchatie](#)

[patjburke](#) 12 hours ago



• [@johnmayo](#) I don't think the Finns have a word for expulsion [#edchatie](#)

[KeywordsEnglish](#) 12 hours ago



• [@friedacrehan](#) [#edchatie](#) Not legally obliged to send children to school in Ireland-onus to teach disrupt.students should be back on parents

[peter_lydon](#) 12 hours ago



• [@CuffeL](#) [@fboss](#) [@seomraranga](#) it's not something I agree with [#edchatie](#)

[MaggieMGreen](#) 12 hours ago



• [#edchatie](#) personally i don't think expulsion should even be in our vocab but that would require a total overhaul, likely? not very

[Emer_Byrden](#) 12 hours ago



• [@CuffeL](#) [@dprindle](#) I agree - it's a last resort. Also agree with [@MaggieMGreen](#)- lack of resources in & outside school to help [#edchatie](#)

[fboss](#) 12 hours ago



• [#edchatie](#) The teacher is often a child's second chance <http://t.co/UUiCbZMhvia> [@Frazzlld](#)

[peter_lydon](#) 12 hours ago



• [@OLNicki](#) [@mariesynnot](#) totally agree. What's the solution ? Better supports I think but is that likely to happen ? [#edchatie](#)

[MaggieMGreen](#) 12 hours ago



• [@KeywordsEnglish](#) [@johnmayo](#) errotaminen I think, John! [#edchatie](#)

[CuffeL](#) 12 hours ago



• I'm looking for the appropriate wording in the Education Act relating to suspension/expulsion. Anyone know it? [#edchatie](#)

[seomraranga](#) 12 hours ago



• [@OLNicki](#) Absolutely. I've seen the positive effect they can have on young people in inner city London [#edchatie](#).

[KeywordsEnglish](#) 12 hours ago



• [@BridCarlow](#) [#edchatie](#) Nothing beats the very earliest possible intervention for children most at risk of behavioural issues coming from home

[peter_lydon](#) 12 hours ago



• [@Emer_Byrden](#) The language carries a lot of baggage certainly. [#edchatie](#)

[seomraranga](#) 12 hours ago



[@fboss](#) Henry Martin, Primary Teacher and ICT Masters Student busily working on a Lit Review while dipping in and out of Twitter [#edchatie](#)

[henrymartin1](#) 12 hours ago



• [@tweepete](#) [@fboss](#) [@Cuffel](#) [@MaggieMGreen](#) Expulsion = 180 days. Ss is then evaluated for readmit & then monitored. [#edchatie](#)

[dprindle](#) 12 hours ago



• [@talsara](#) I think some are saying tonight that it could be in the best interests of the rest of the students - very tough call [#edchatie](#)

[fboss](#) 12 hours ago



• [@MaggieMGreen](#) [@olnicki](#) It's a catch 22, how to serve all needs without compromising individual needs [#edchatie](#)

[mariesynnott](#) 12 hours ago



• [@Cuffel](#) [#edchatie](#) this is true but [@TeachingCouncil](#), [@NCCA_ceo](#) and govt expect us to be all things to all children

[peter_lydon](#) 12 hours ago



• [@MaggieMGreen](#) [@tweepete](#) [@fboss](#) [@cuffel](#) Like most things I think it is situational. [#edchatie](#)

[dprindle](#) 12 hours ago



• [@OLNicki](#) What do you mean by that> <- sounds interesting [#edchatie](#)

[fboss](#) 12 hours ago



• [@PrimEdTeacher](#) [@peter_lydon](#) [@Frazzlld](#) True, and acting out may reflect a troubled home life [#edchatie](#)

[Cuffel](#) 12 hours ago



• [@mariesynnott](#) [@olnicki](#) do we start from the ground up? More input in the lower classes about EI and moral and ethical education? [#edchatie](#)

[MaggieMGreen](#) 12 hours ago



• It's another 'who do we serve' debate. Parents with high expectations? A board maintaining reputation? Children with care needs? [#edchatie](#)

[PrimEdTeacher](#) 12 hours ago



• [@Cuffel](#) [#edchatie](#) but with the underlying appreciation of the value of school

[peter_lydon](#) 12 hours ago



• "[@mariesynnott](#): [@MaggieMGreen](#) [@olnicki](#) It's a catch 22, how to serve all needs without compromising individual needs [#edchatie](#)" agree

[ffarry1](#) 12 hours ago



- [@CuffeL](#) [@PrimEdTeacher](#) [@peter_lydon](#) [@Frazzlld](#) Or holding it in to the point of loss of control. We have to be aware of all our Ss [#edchatie](#)

[dprindle](#) 12 hours ago



- [@dprindle](#) How does it effect the State Grade? Is that an average for each school in a State? Is it connected to finances? [#edchatie](#)

[fboss](#) 12 hours ago



- [@dprindle](#) [@tweepete](#) [@fboss](#) [@cuffel](#) agreed. I've used it to great effect in some situations and in others not so much [#edchatie](#)

[MaggieMGreen](#) 12 hours ago



- [@OLNicki](#) [#edchatie](#) No such thing as 'best practice' in Irish education=not funded; we're expected to 'get' behaviour is all presentations

[peter_lydon](#) 12 hours ago



- [@mariesynnot](#) [@MaggieMGreen](#) [@OLNicki](#) A society is for all its citizens, not just for the brightest and the best. [#edchatie](#)

[CuffeL](#) 12 hours ago



- [@MaggieMGreen](#) [@olnicki](#) Need to work with the parents also, [#edchatie](#)

[mariesynnot](#) 12 hours ago



- Latest from Seas Suas: Listowel Taekwondo Club gives demonstration - <http://t.co/AbzeTmJo> [#edchatie](#) [#classblogs](#) [#comments4kids](#)

[SeasSuasNet](#) 12 hours ago



- [@CuffeL](#) [#edchatie](#) It is most definitely NOT for the brightest and best either; more like this <http://t.co/H7upmpSi>

[peter_lydon](#) 12 hours ago



- We're just over halfway through tonight and here's a teaser about next week's special [#edchatie](#) Stay tuned for announcement later . . .

[fboss](#) 12 hours ago



- Tonight's topic is a real moral dilemma and it's hard to really know how we would react unless we were confronted with it. [#edchatie](#)

[seomraranga](#) 12 hours ago



- [@fboss](#) Through the magic of how the state calculates the grades dropout rate is part of the whole equation [#blackmagic](#) [#edchatie](#)

[dprindle](#) 12 hours ago



Tonight's [#edchatie](#) discussion is making me want to pull out my battered copy of Drudy and Lynch on Educational Sociology [#edchatie](#)

[PrimEdTeacher](#) 12 hours ago



[@Cuffel](#) [@mariesynnot](#) [@olnicki](#) how would you approach repeated physical assaults in a classroom situation? [#edchatie](#)

[MaggieMGreen](#) 12 hours ago



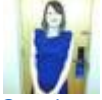
[@MaggieMGreen](#) [@dprindle](#) [@tweepete](#) [@fboss](#) I've heard good things about it in the second chance sector. [#edchatie](#)

[Cuffel](#) 12 hours ago



[@fboss](#) We also have a middle school that won't suspend anymore because they got dinged on attendance by state auditors. [#edchatie](#)

[dprindle](#) 12 hours ago



[@mariesynnot](#) [@olnicki](#) absolutely agree [#edchatie](#)

[MaggieMGreen](#) 12 hours ago



[#edchatie](#) what is that restorative intervention? can't find original tweet. sounds interesting or maybe biblical, can't decide which

[Emer Byrden](#) 12 hours ago



[@MaggieMGreen](#) [@Cuffel](#) [@mariesynnot](#) [@olnicki](#) 1. That becomes a police matter first. then a school issue. [#edchatie](#)

[dprindle](#) 12 hours ago



[@OLNicki](#) I agree, a diff temp ed setting where issues can be worked on and then reintegrate the student to mainstream setting [#edchatie](#)

[mariesynnot](#) 12 hours ago



[@peter_lydon](#) Managing super-diverse learning needs is the greatest challenge we face in edu. today [#edchatie](#)

[KeywordsEnglish](#) 12 hours ago



[@PrimEdTeacher](#) As teachers we serve and prioritise the needs of the child at all times [#edchatie](#)

[mariesynnot](#) 12 hours ago



[@dprindle](#) [@cuffel](#) [@mariesynnot](#) [@olnicki](#) but in a school situation the safety of all is important. If other children can't be [#edchatie](#)

[MaggieMGreen](#) 12 hours ago



[@seomraranga](#) I think, even confronted with it, it would not be easy. Also as [@dprindle](#) said "it's situational" [#edchatie](#)

[fboss](#) 12 hours ago



• [@dprindle](#) [@cuffel](#) [@mariesynnott](#) [@olnicki](#) kept safe what is the solution? I'm not in favour of expulsion. I'd prefer an alternative [#edchatie](#)

[MaggieMGreen](#) 12 hours ago



• [@Emer_Byrden](#) I think this is the programme I heard good things about <http://t.co/sm1A7IYh> [#edchatie](#)

[CuffeL](#) 12 hours ago



• [@MaggieMGreen](#) [@cuffel](#) [@mariesynnott](#) [@olnicki](#) I agree with you Maggie [#edchatie](#)

[dprindle](#) 12 hours ago



• [@tweepete](#) [@cuffel](#) [@mariesynnott](#) [@olnicki](#) whilst avoiding expulsion? [#edchatie](#)

[MaggieMGreen](#) 12 hours ago



• [@peter_lydon](#) [#edchatie](#) My point exactly. We're supposed to be experts in so many areas with little or no professional support.

[OLNicki](#) 12 hours ago



• [@mariesynnott](#) And as teachers (the new Maine!) go, so should the Nation! [#edchatie](#)

[PrimEdTeacher](#) 12 hours ago



• [@seomraranga](#) I agree, feel I'm being idealistic as have never dealt with it. Hard to be objective about something so subjective. [#edchatie](#)

[mariesynnott](#) 12 hours ago



• [#edchatie](#) Coming to Ireland sooner than you think <http://t.co/hZnI3V8b>

[peter_lydon](#) 12 hours ago



• [@NeilPWard](#) Thanks. This is the link to Ed Welfare Act concerning expulsion <http://t.co/TnOXPBct> [#edchatie](#)

[seomraranga](#) 12 hours ago



• The natural ecology of a school demands expulsion as an upper limit but no educator ever wants to 'expel' a pupil. [#edchatie](#)

[NewEnglishBlog](#) 12 hours ago



• [@tweepete](#) [#edchatie](#) Hate to say it, but what happens if ones best is not good enough?

[peter_lydon](#) 12 hours ago



• [@MaggieMGreen](#) [@dprindle](#) [@mariesynnott](#) [@OLNicki](#) Not easy, but ask, why is it happening, what provokes it, etc. [#edchatie](#)

[CuffeL](#) 12 hours ago



• [@Cuffel](#) [@mariesynnot](#) [@MaggieMGreen](#) Isn't it indicative of fundamental issues with how we approach education in general? [#edchatie](#)

[OLNicki](#) 12 hours ago



• [@NewEnglishBlog](#) Sometimes the Ss leaves no other option. [#edchatie](#)

[dprindle](#) 12 hours ago



• Scott Steinberg: Teaching Technology: 10 Lessons Every School Should Share, v pertinent post <http://t.co/4GeDxEch> (via [@gcouros](#)) [#edchatie](#)

[levdavidovic](#) 12 hours ago



• [@seomraranga](#): So true! And every single case is different. It's always interesting to see how Ts do react & how much they 'take' [#edchatie](#)

[KeywordsEnglish](#) 12 hours ago



• [@mariesynnot](#) I just think specialised intervention might be needed in some circumstances. [#edchatie](#)

[OLNicki](#) 12 hours ago



• [@OLNicki](#) [#edchatie](#) maybe if we ensured that the alt school was temporary! Back to mainstream after intensive support with existing issues...

[natalie swain](#) 12 hours ago



• [@peter_lydon](#) [@BridCarlow](#) We know early intervention works but the problem is the Government is cutting funding [#edchatie](#)

[dhudaigh2710](#) 12 hours ago



• [@BridCarlow](#) Good point - we're looking at "Expulsion and the right to education" as well as "The individual or the majority?" [#edchatie](#)

[fboss](#) 12 hours ago



• [@natalie_swain](#) [#edchatie](#) re-integration is extremely difficult

[peter_lydon](#) 12 hours ago



• [@Cuffel](#) [@dprindle](#) [@mariesynnot](#) [@olnicki](#) at times issues that schools are not equipped to address for the child unfortunately [#edchatie](#)

[MaggieMGreen](#) 12 hours ago



• [@peter_lydon](#) [#edchatie](#) just the title of this report sends chills through me..

[Emer Byrden](#) 12 hours ago



[@MaggieMGreen](#) [@Cuffel](#) [@mariesynnot](#) [@olnicki](#) we have 1100 Ss and 2 counselors. [#edchatie](#)

[dprindle](#) 12 hours ago



• [@peter_lydon](#) [@tweepete](#) Its all you can do, so dont kill yourself for failing. [#edchatie](#)

[CuffeL](#) 12 hours ago



• [@OLNicki](#) Agree [#edchatie](#)

[mariesynnot](#) 12 hours ago



• [@fboss](#) [@BridCarlow](#) In a situation with large class sizes, the individual needs of many get downplayed. Resources are stretched. [#edchatie](#)

[OLNicki](#) 12 hours ago



• [@NeilPWARD](#) Here's some general info (+ links) <http://t.co/fyFY3fct> from Citizens Information website [#edchatie](#)

[fboss](#) 12 hours ago



• [@CuffeL](#) Sadly, this is what some teachers in the US have done in response to the GERM effect. [#edchatie](#)

[peter_lydon](#) 12 hours ago



• We need to be aware (visible signs), hear (listen to cues), talk and listen to Ss. Might help prevent further issues. [#edchatie](#)

[dprindle](#) 12 hours ago



• [@dprindle](#) [@cuffel](#) [@mariesynnot](#) [@olnicki](#) how can each decision remain child centred with the kind of stats we are dealing with :([#edchatie](#)

[MaggieMGreen](#) 12 hours ago



• [@MaggieMGreen](#) [@dprindle](#) [@mariesynnot](#) [@OLNicki](#) Talk to their case worker, if they don't have one sort it if issues big enough [#edchatie](#)

[CuffeL](#) 12 hours ago



• [@dprindle](#) There are many actions that can justifiably cause expulsion but action never takes place in isolation. Root causes key [#edchatie](#)

[NewEnglishBlog](#) 12 hours ago



• [@peter_lydon](#) That is not a nice ending for anyone [#edchatie](#)

[fboss](#) 12 hours ago



• [#edchatie](#) Why haven't we yet copped on the importance of emotional literacy for boys?

[peter_lydon](#) 12 hours ago



[@NewEnglishBlog](#) True that is why we need to be aware of and talk to our Ss. [#edchatie](#)

[dprindle](#) 12 hours ago



• [@dprindle](#) In larger class sizes it is challenging to be on the look out for all the warning signs [#edchatie](#)

[dhudaigh2710](#) 12 hours ago



• [@dhudaigh2710](#) We as teachers always need to be circulating through the room whether teaching or practicing. [#edchatie](#)

[dprindle](#) 12 hours ago



• 15 official mins left in tonight's [#edchatie](#) + an announcement coming up shortly about the special [#edchatie](#) next week

[fboss](#) 12 hours ago



• [@MariaMernagh](#) [@primedteacher](#) We will always have boundaries within we must work, but child's needs are always priority [#edchatie](#)

[mariesynnott](#) 12 hours ago



• The school's Code of Behaviour has to outline steps to be taken to exclude a pupil and the grounds on which this happens [#edchatie](#)

[seomraranga](#) 12 hours ago



• [@tweepete](#) [#edchatie](#) Yes - real men! and we know they don't cry.

[peter_lydon](#) 12 hours ago



• [@OLNicki](#) [#edchatie](#) agreed! Some special schools already provide help with sebd issues and sometimes assist return to mainstream.

[natalie_swain](#) 12 hours ago



• [@peter_lydon](#) [@BridCarlow](#) Cost benefit analysis supports early intervention. On average €100k to place a person in Mountjoy. [#edchatie](#)

[dhudaigh2710](#) 12 hours ago



• Tonight's [#edchatie](#) discussion will be collated and published on <http://t.co/i35TU65e> tomorrow morning & as usual through [@chirpstory](#)

[fboss](#) 12 hours ago



• Great topic tonight [@fboss](#) and [#edchatie](#) tweeps. Have to leave. My wife is sending me to the post office B4 it closes. :)

[dprindle](#) 12 hours ago



• [@peter_lydon](#) I know I'm not some of my students optimal teacher, but I try. [#edchatie](#)

[CuffeL](#) 12 hours ago



• [@dhudaigh2710](#) [#edchatie](#) ah yes - but wud you rather pay €500 every 6 months to fix a car, or 20K up front when you don't have it?

[peter lydon](#) 12 hours ago



• [@mariesynnott](#) [@PrimEdTeacher](#) agree. Both in the school and in the home. [#edchatie](#)

[MariaMernagh](#) 12 hours ago



• [@dhudaigh2710](#) [@peter_lydon](#) [@BridCarlow](#) [#edchatie](#) but they will always fill prisons

[johnmayo](#) 12 hours ago



• Meaningful teaching is allowing each pupil reach his or her potential. We as teachers have a duty to see this happen [#edchatie](#)

[FoleyKev](#) 12 hours ago



• [@OLNicki](#) Yes smaller class sizes can give child the more individual attention needed but sometimes behaviour can disimprove [#edchatie](#)

[dhudaigh2710](#) 12 hours ago



• [@CuffeL](#) [#edchatie](#) That's every teacher, me too. Sadly, with [#JCRform](#), only the standardised test scores will matter.

[peter lydon](#) 12 hours ago



• [@johnmayo](#) [#edchatie](#) - the last thing you want is educated disruptive people running around!

[peter lydon](#) 12 hours ago



• [@peter_lydon](#) Point taken but I believe in front up investment especially given domino effect on families etc [#edchatie](#)

[dhudaigh2710](#) 12 hours ago



• [@dhudaigh2710](#) [@peter_lydon](#) [@BridCarlow](#) I don't know YR costs, but students are paid. Early intervention always saves money [#edchatie](#)

[CuffeL](#) 12 hours ago



• [@FoleyKev](#) [#edchatie](#) That's meaningful education; meaningful teaching is getting through the curriculum in the allotted time.

[peter lydon](#) 12 hours ago



• [@dhudaigh2710](#) [#edchatie](#) Oh the logic is inescapable, but politics doesn't work on the logic of education

[peter lydon](#) 12 hours ago



• [@tweepete](#) [#edchatie](#) which is why they prefer to lock people up rather than TRULY free them.

[peter lydon](#) 12 hours ago



• [@dhudaigh2710](#) [@OLNicki](#) I agree. With larger class sizes it can be easier to leverage 'peer pressure' as a type of intervention [#edchatie](#)

[KeywordsEnglish](#) 12 hours ago



• [@dhudaigh2710](#) Is it better leaving a child in a class of 28+ where they're disruptive, not learning, preventing others learning? [#edchatie](#)

[OLNicki](#) 12 hours ago



• [@peter_lydon](#) [@johnmayo](#) educated disruptive? is that the bankers, or the teachers? [#edchatie](#)

[CuffeL](#) 12 hours ago



• [@FoleyKey](#) Yes but parents also have a responsibility and sometimes they do not honour this. They need to work with teachers. [#edchatie](#)

[dhudaigh2710](#) 12 hours ago



• [@CuffeL](#) [#edchatie](#) Nope-teachers and bankers are all nice middle class people with mortgages.

[peter_lydon](#) 12 hours ago



• [@dhudaigh2710](#) I just think we need proactive, meaningful interventions that go beyond 'it's the teacher's problem' [#edchatie](#)

[OLNicki](#) 11 hours ago



• [#edchatie](#) in the words of Captain Underpants books, when it comes to givt. view of schools "That's a 'your' problem, not a my problem".

[peter_lydon](#) 11 hours ago



• [@OLNicki](#) No. It is not. However, I have in the past weeks had a pupil put a cord up to my neck, threatening me in a small class. [#edchatie](#)

[dhudaigh2710](#) 11 hours ago



• [@KeywordsEnglish](#) [@dhudaigh2710](#) Is having peers pressure or shame children really an appropriate intervention though? [#edchatie](#)

[OLNicki](#) 11 hours ago



• [@peter_lydon](#) [#edchatie](#) I can imagine! It has been done though! Need more resources and support! [#ISoundLikeABrokenRecord](#)

[natalie_swain](#) 11 hours ago



• [@OLNicki](#) [@dhudaigh2710](#) That is the core question. But concentrate on the tricky one, as they need it, the rest will survive. [#edchatie](#)

[CuffeL](#) 11 hours ago



• [@Cuffel](#) [@peter_lydon](#) [@johnmayo](#) [#edchatie](#) with educated disruptive at least you might get more interesting arguments...
 Emer Byrden 11 hours ago



• We're into the last 5 official minutes of tonight's [#edchatie](#) - but I'll pull together all responses to it tomorrow, so you can still add
 fboss 11 hours ago



• [@dhudaigh2710](#) I think it's time for meaningful discourse on the subject - with research being looked at for what works. [#edchatie](#)
 OLNicki 11 hours ago



• [@Emer_Byrden](#) [#edchatie](#) the last thing the Establishment want (esp. after the 2007 roll back on their salary cut!)
 peter lydon 11 hours ago



• Allowing pupils with special ed needs into mainstream schools has lowered the bar for ALL. [#edchatie](#)
 FoleyKev 11 hours ago



• [@Cuffel](#) [@dhudaigh2710](#) Is that the best we can expect of our ed system? To survive? [#edchatie](#)
 OLNicki 11 hours ago



• [#edchatie](#) Imp. to remember there are two types of disruptive- those born and those made.
 peter lydon 11 hours ago



• [@OLNicki](#) [@KeywordsEnglish](#) Not about shaming but about positive reinforcement and ensuring that you praise the child when deserved. [#edchatie](#)
 dhudaigh2710 11 hours ago



• [@henrymartin1](#) [@dhudaigh2710](#) What's the track record with that? Is it successful? [#edchatie](#)
 OLNicki 11 hours ago



• [@OLNicki](#) [@dhudaigh2710](#) it's NOT the teacher's prob. Could be medical and/or psychological. Lots of diff solutions needed. [#edchatie](#)
 MariaMernagh 11 hours ago



• [@MariaMernagh](#) [@dhudaigh2710](#) Comes back to having appropriate supports. [#edchatie](#)
 OLNicki 11 hours ago



• Here's some info about next week's special [#edchatie](#) => <http://t.co/oOeLWzb2>
 fboss 11 hours ago



• [@FoleyKey](#) [#edchatie](#) but improved it no end in terms of how society deals with all of its people, no?

[Emer Byrden](#) 11 hours ago



• Next week sees a special [#edchatie](#) for Safer Internet Day 2013. The theme is "Connect with Respect" <http://t.co/oOeLWzb2>

[fboss](#) 11 hours ago



• [@dhudaigh2710](#) [@KeywordsEnglish](#) Assuming they're not dragging others down to their behavioural level. Have seen it happen. [#edchatie](#)

[OLNicki](#) 11 hours ago



• [#edchatie](#) Thanks for the chat. Sorry to be more cynical/realistic than usual-but this topic points to pointless waste of human potential

[peter lydon](#) 11 hours ago



• [@FoleyKey](#) gives students an insight into disability, rather than just a vocabulary of disparagement. Education not just academics [#edchatie](#)

[CuffeL](#) 11 hours ago



• [@OLNicki](#) [@henrymartin1](#) Depends on the child and the issues involved but all children like praise, some may be uncomfortable [#edchatie](#)

[dhudaigh2710](#) 11 hours ago



• [@dhudaigh2710](#) It's not about shaming them. There may be others in the group who can talk to them [#edchatie](#). Sometimes Ts are irrelevant!

[KeywordsEnglish](#) 11 hours ago



• Nice set of blogs and articles on more effective correcting and feedback via [@EngChatUK](#) [#edchatie](#) [#engchat](#) <http://t.co/wh4EjfKv>

[Bcs historydept](#) 11 hours ago



• Take a look at this new video brought out for Safer Internet Day 2013: <http://t.co/gpwhxyiV> There'll be more throughout the week [#edchatie](#)

[fboss](#) 11 hours ago



• [@fboss](#) brilliant topic, Fred and very timely. Looking for mtl's in Irish if anyone has them. [#edchatie](#)

[mariesynnot](#) 11 hours ago



• I'll be there: Next week sees a special [#edchatie](#) for Safer Internet Day. [@fboss](#) The theme is "Connect with Respect" <http://t.co/CV5SVj77>

[Webwise Ireland](#) 11 hours ago



Feel free to introduce this vid as a discussion point to your classes for Safer Internet Day 2013 <http://t.co/gpwhxyiV> #edchatie
fboss 11 hours ago



@OLNICKI @KeywordsEnglish Yes that is what I meant by a disimprovement in behaviour earlier on but sometimes it is only temporary. #edchatie
dhudaigh2710 11 hours ago



@fboss: Next week sees a special #edchatie for Safer Internet Day 2013. The theme is "Connect with Respect" <http://t.co/aSRUcgtF> great idea
pamelaabrien 11 hours ago



@MariaMernagh @dhudaigh2710 'ALL' being the key word there. #edchatie
OLNICKI 11 hours ago



There are more videos that you might want to view with students in class over at Watch Your Space => <http://t.co/j22nimTf> #edchatie
fboss 11 hours ago



If there are young people at risk or exclusion I always ask the group what they want to do. Should we expel them or try and help? #edchatie
KeywordsEnglish 11 hours ago



@Bcs_historydept @EngChatUK Thanks, a lot of reading there! #edchatie
CuffeL 11 hours ago



There's more on cyberbullying and Safer Internet Day too on the Facebook page => <http://t.co/WQd9J24j> #edchatie
fboss 11 hours ago



@KeywordsEnglish Thats it. #edchatie
CuffeL 11 hours ago



Good vid: MT @fboss Take a look: New video brought out for Safer Internet Day 2013: <http://t.co/HQPhFAtN> More throughout the week #edchatie
ScottRRocco 11 hours ago



@mariesynnot It's the one that won the vote - amazing reaction tonight to the discussion - very positive. Thanks to all for #edchatie chat
fboss 11 hours ago



[#edchatie](#) [#eu2013ie](#) Teaching about citizenship & the EU? For useful resources sign up for your free trial at <http://t.co/J7nQHTaX>

[EU4Schools](#) 11 hours ago



• [@fboss](#) [#edchatie](#) interesting discussion tonight. Lovely to see that all in agreement that the child is paramount, not the system.

[MariaMernagh](#) 11 hours ago



• [@NeilPWard](#) Please add in the link on Twitter and stick the [#edchatie](#) hashtag onto it too

[fboss](#) 11 hours ago



• [@MariaMernagh](#) Yes - that's really what stood out tonight - all looked to support the student [#edchatie](#)

[fboss](#) 11 hours ago



• [@NeilPWard](#) Perhaps [#edchatie](#) folk could join in this discussion so to see how many teachers will volunteer to take up leadership posts?

[seomraranga](#) 11 hours ago



• [@dprindle](#) Safe trip and thanks for coming along to tonight's [#edchatie](#)

[fboss](#) 11 hours ago



• [@fboss](#) [#edchatie](#) and that's what makes a well educated adult. Says so much about Irish teachers.

[MariaMernagh](#) 11 hours ago



• [@fboss](#) been keeping a low profile on the twitter machine lately; the [#edchatie](#) transcripts are keepin me in the loop though ;-)

[evelynconnor](#) 11 hours ago



• [#edchatie](#) never expelled anyone in 19 years as a principal. Many years since anyone suspended even

[DPWOffaly](#) 11 hours ago



• Just added some speakers to [#CESI40](#) Lanyrd page at <http://t.co/6lXqdYfh> (more to follow). If you're attending, pls add your name [#edchatie](#)

[donenda](#) 11 hours ago



• Just added some speakers to [#CESI40](#) Lanyrd page at <http://t.co/LiZJmjWB> (more to follow). If you're attending, pls add your name [#edchatie](#)

[cesitweets](#) 11 hours ago



• [@DPWOffaly](#) Such statistics are invariably dependent on the demographics of an area though. [#SleepyRuralAreaOrHardcoreUrbanArea](#) [#edchatie](#)

[henrymartin1](#) 10 hours ago



• [@NeilPWard](#) I can appreciate the difficulty, teachers on [#edchatie](#) are generally positive though and if they're angry, tide needs turning

[levdavidovic](#) 10 hours ago



• [@dhudaigh2710](#) [@OLNicki](#) Its certainly successful for the mainstream class teacher and the rest of the mainstream class [#edchatie](#)

[henrymartin1](#) 10 hours ago



• [@NeilPWard](#) Speaking of engagement, how about the Minister joins us for a special [#edchatie](#) some Monday night? [@levdavidovic](#)

[seomraranga](#) 10 hours ago



• [@NeilPWard](#) [@seomraranga](#) Teaching Council responded to a specific [#edchatie](#), would like to see Minister respond to [#jcreform](#) concerns maybe

[levdavidovic](#) 10 hours ago



• [@NeilPWard](#) I'd lend him my Twitter a/c for the hour for the purposes of engagement! Or he could set up a/c for 1hr [@levdavidovic](#) [#edchatie](#)

[seomraranga](#) 10 hours ago



• Finally home after a hectic day, sorry to miss [#edchatie](#) (again!) due to INTO Branch meeting. Will catch up tomorrow. Goodnight!

[muirfoynes](#) 10 hours ago



• [@NeilPWard](#) Go on persuade him! He's tough enough for the debate! [#edchatie](#) folk are generally well-mannered. [@levdavidovic](#)

[seomraranga](#) 10 hours ago



• Agree with [@seomraranga](#), hat tip to [@neilward](#) for sticking his head above the parapet! [#edchatie](#)

[levdavidovic](#) 10 hours ago



• [#edchatie](#) What COULD happen if a child's ability was denied (yawn...yes..it does happen!) <http://t.co/4pGFmhAj> [#gtie](#) [#gtchat](#) via CAGT

[peter_lydon](#) 10 hours ago



• Fair play to [@NeilPWard](#) for offering himself up to the [#edchatie](#) tweeps. Nice welcome from [@seomraranga](#) [@levdavidovic](#) - robust but friendly!

[emernowlan](#) 9 hours ago



• A short blog on dealing with disruptive students [#edchatie](#) <http://t.co/8zDOa74S> Utilising the power of the group has worked for me

[KeywordsEnglish](#) 9 hours ago



- Government to launch major anti-bullying plan today (via [@thejournal_ie](#)) <http://t.co/3BBkJwYG> [#edchatie](#)
[seomraranqa](#) 2 hours ago



- [@dprindle](#) Interesting approach but doesn't that take power from the school in determining own code of conduct? [#edchatie](#)
[fboss](#) 1 hour ago



- [@pamelaobrien](#) The great thing about the [#edchatie](#) chat though is it continues before & after the one official hour
[fboss](#) 1 hour ago

• Content from Twitter